

---

# BritCham Shanghai Membership Package 2026



## About us

The British Chamber of Commerce Shanghai is a dynamic network of international and Chinese businesses with a common interest in China. Our members are the pulse of our organisation — we advocate best practice; we share knowledge; and we build trusted and long-lasting friendships.

**Our purpose is to make connections.** Connections that create opportunities, empower businesses and unite our community.

Members from countries worldwide join BritCham Shanghai to gain access to China's most dynamic trading hub - Shanghai. With over 270 member companies already operating in China, we provide the best possible on-the-ground intelligence for companies and brands looking to expand their operations here.



### **Advocacy**

We empower our members by developing better trade relations and enabling policy reform. We work to promote member success and share essential industry insights.



### **Knowledge**

We enable businesses to flourish through online and in-person knowledge-sharing events - from roundtables, panel discussions and networking events; to training and mentoring.



### **Community**

Our community activity unites our members through social gatherings, signature events and storytelling. Beyond just business, this is where trusted friendships are made.

## The value we bring



### Build real business relationships

"Aston Martin has been a platinum member for over five years, during this time the BritCham Shanghai has been an excellent resource. The membership has great sector breadth, and a clear pro-business approach helping British companies work together and also work effectively with international businesses."

Andy Halsam, Regional President, Aston Martin Lagonda (China)



### Stronger voice, stronger outreach

"Being a member of BritCham Shanghai has undeniably amplified the voice of The University of Manchester China Centre. Through their network and support, we have experienced significant growth in our outreach and influence. BritCham's extensive networks have provided us with an invaluable platform to showcase university news, events, courses, and initiatives, enabling us to connect with a diverse and engaged audience."

Sherry Fu, Managing Director, China, The University of Manchester



### A circle of trust

"BritCham Shanghai has proved a truly excellent place for us to connect with other SMEs and find interested business partners. Here we can operate in a circle of trust and take real steps for our business development."

Jessie Chen, Shanghai CCTong Legal Consulting Co.



### Decision-maker access

"BritCham Shanghai provides us a unique platform to broaden the business opportunities in this dynamic China market, to connect with various member companies and make us fully realize the key policies for local communities and across the country."

Ted Wan, former President Greater China at Smiths Group



### Co-ordinating with official channels

"Linklaters have been active members of BritCham Shanghai for many years. As a channel to government, we appreciate the opportunities to feed in the Chamber's surveys of members' opinion and the resulting papers seem to offer a balanced voice that is getting traction on behalf of members."

Alex Roberts Counsel, Linklaters LLP



### A Platform for Insight, Recognition and Growth

I was initially drawn to BritCham Shanghai for the access it provides to closed-door sessions and CEO roundtables, which offer valuable insights for business leaders. My involvement in the Advanced Engineering & Manufacturing Committee, and the opportunity to work alongside outstanding professionals, also became an invaluable source of mentorship and personal growth. Through awards such as ESG Leader of the Year and Innovator of the Year, and with our company recognised at the British Business Awards, BritCham's support has helped strengthen both my professional development and our company's reputation in the UK-China business community.

Linian Li, Country Manager, Modern Water

# 2025 Highlights in Numbers

## Membership

# 81

New members joined

10 new Platinum members\* joined

*\*Incl. Associate Platinum*

## Committees

# 12

Active Committees include **156** individual member volunteers

**117 committee events & meetings**

**2,100+** attendees

## Activities

# 200+

activities (incl. Chamber and Committee events and meetings) attracted **8,000+** audience

## Sustainability & Innovation Awards

# 143

applications from a wide range of industries entered **8** awards  
**46** outstanding businesses and individuals were shortlisted.

The newly introduced online voting element garnered nearly **1.4 million** public views.

## Community

# 6,000+

registered participants and **100+** organisations and vendors support the Fortnum & Mason's Great British Day Out, celebrating culture and community.

**Over RMB 60,000** raised at the Shanghai Nights year-end party to support the charity organisation – **RDA Shanghai**.

## Marketing & Communications

# 17,730+

WeChat followers (**17%** increase)

**5,880+** LinkedIn followers (**8%** increase)

**27** videos published on WeChat Channel, reaching **15,000+** viewings

**50+** media mentions

## Why become a member?

### **CONNECT around 300**

international and Chinese business members  
in a wide range of sectors

### **Build trusted relationships**

with senior company representatives  
through members-only activities

### **Event speaker opportunities**

Showcase your company and your expertise  
on our well-respected platform  
<200 activities in 2025>

### **Cost-effective marketing**

Position and promote your business to a high-value audience  
through our Member Directory listing, widely-read weekly newsletter,  
member-exclusive deals and live-events prize offerings  
<32,000+ audience across newsletter, WeChat and LinkedIn>

### **Industry committees**

Join teams of industry leaders to design and take part in  
Chamber events, share knowledge, discuss challenges and expand your  
resources.

### **Expansion in East China**

Join our outreach activities in East China to lead engagement with local  
companies who are focused on international business.

Finally, choose quality and reputation. As the oldest international Chamber of Commerce in Chinese mainland, BritCham Shanghai has a long history of supporting companies both big and small. We have a pro-business and friendly atmosphere. Our events are well-respected and well-attended, with the largest drawing 4,000+ attendees. Thanks to our members, our network is resourceful and wide-reaching. Join us and let's connect !

# Our products

## Advocacy



### Advocacy Roundtable

The series aimed to gather and convey UK business voices to the UK government to guide and influence opinion and decision-making on diverse topics.

### Winners & Leaders

This product promotes the best of British business success and showcases members' achievements culminating in the biennial British Business Awards.

### The Paper Trail

This is your go-to online archive of commentary, market reports, white papers supplied by members, for members. The Paper trail keeps track of latest insights and trends across many industries in China.

## Knowledge



### Knowledge Exchange

This product delivers a series of quality roundtables, panel discussions, debates, keynote presentations — all designed to share timely, valuable knowledge about business in China.

### Masters & Mentors

This product is a series of business training and mentorship programmes to skill-up your team.

### Business Exchange

This is our series of structured networking events designed to spark new business opportunity for members.

## Community



### Great British Events

A collection of exceptional British events that brings our wider business community together. Popular events include Great British Day Out, St Andrew's Ball, 1915 Dinner and Great British Sports Day.

### After Hours

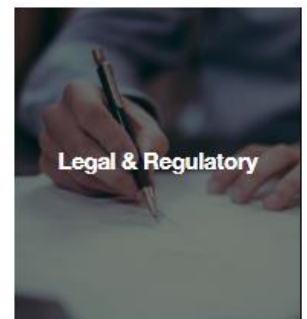
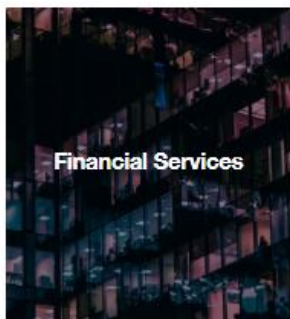
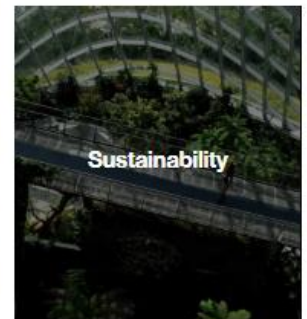
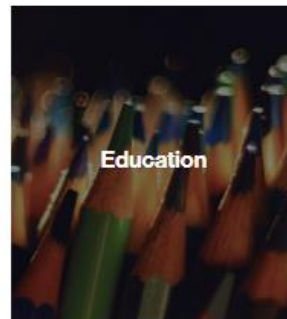
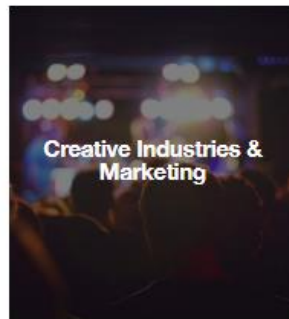
A series of light social events that unites members for drinks, chats and all-round fun after the working day.

## Our committees

The 'engine' of our organisation. Our Chamber delivers enhanced value to its membership through a series of active member-run Committees.

These volunteer teams of professionals from our member companies are dedicated to designing activities which bring industry expertise and local knowledge to wider the BritCham community.

Joining a committee enables members to increase their exposure and address topics currently impacting business in China. Learn more about our Committees below and let's connect!



# Executive Committee 2026

## Chair



**Edward Weeks**  
Senior Executive Vice President, Deputy Chief Executive Officer, HSB C Bank (China) Company Limited

## Vice Chair



**Anthea Wang**  
Executive Vice President, Public Relations and Corporate Affairs, JLR China

## Vice Chair



**Harriet Sheffer**  
Head of Strategy & Commercial, OUTFORM

## Treasurer



**John Chattock**  
Partner, KPMG Shanghai

## Consultant Director



**Alex Roberts**  
Partner, Head of China TMT, Co-Head of Games and Interactive Entertainment, Linklaters LLP

## Policy Adviser



**Christopher Dunn MBE**  
Associate, Brunswick Group

## Strategic Adviser



**Vicky Lord**  
Managing Partner, Hameys

## Committee Ambassador



**Vicky Li**  
FCMA, CGMA, Regional VP, North Asia, the Association of International Certified Professional Accountants (AICPA&CIMA)

## Brand & Comms Ambassador



**Daniel Lyons**  
Director of Communications, Dulwich College Shanghai Pudong

## International Representative



**Ray Chisnall**  
Industrial, Manufacturing & Logistics Sector Lead, Gleeds

## Co-Opted



**Stephanie Chen**  
General Manager, Chinese Mainland – Shanghai, John Swire & Sons



**Siyao Jiang**  
China Managing Partner, ERM

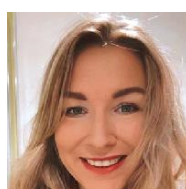
## Ex-Officio



**Matt Burney, CMG**  
British Consul-General Shanghai



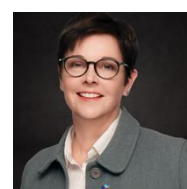
**Sohail Shaikh**  
British Deputy Trade Commissioner for China



**Cat Sinclair-Jones**  
Director East China, British Council; Consul (Culture and Education), British Consulate General Shanghai



**Stuart Dunn**  
Executive Director, BritCham Shanghai



**Kirsten Johnston**  
Founder & CEO, JWCDK

## Chair Emeritus

# Become a member

British Chamber of Solidarity & Partnership

The Chamber is a strong and dynamic network of company members who collectively support, engage and share knowledge with a common interest in China.

Let's connect.

Platinum  
Member

RMB

**47,276**

per year

- **Availability: 30**
- Top UK brands by invitation only

Associate Platinum  
Member

RMB

**47,276**

per year

- **Availability: 8**
- Top Chinese brands by invitation only

Company  
Member

RMB

**16,165**

per year

- A foreign enterprise (JV, WFOE or rep office) **with at least 50% foreign equity ownership**

Associate Company  
Member

RMB

**16,165**

per year

- **Availability: 50**
- A locally owned company or company originally founded in China

Small Enterprise  
Member

RMB

**5,194**

per year

- A foreign enterprise with fewer than 50 employees worldwide **AND** an annual turnover of less than £7m.



	Platinum Member	Associate Platinum Member	Company Member	Associate Company Member	Small Enterprise Member
	RMB 47,276 per year	RMB 47,276 per year	RMB 16,165 per year	RMB 16,165 per year	RMB 5,194 per year
Listing, logo and website in the Chamber Member Directory	✓	✓	✓	✓	✓
New member announcement through digital channels	✓	✓	✓	✓	✓
Access at member rates to member-complimentary events and ticketed events	✓	✓	✓	✓	✓
Exclusive access to benefits offered by other Chamber members	✓	✓	✓	✓	✓
Eligibility to offer a 'member benefit' to all Chamber members	✓	✓	✓	✓	✓
Opportunity to offer lucky draw prizes at Chamber events	✓	✓	✓	✓	✓
Opportunity to provide an event speaker	✓	✓	✓	✓	✓
Opportunity to share news and PR via the Chamber's weekly newsletter and WeChat post	✓	✓	✓	✓	✓
Free posting of job opportunities through the Chamber	✓	✓	✓	✓	✓
Member referrals (at the Chamber's discretion)	✓	✓	✓	✓	✓
Voting rights for the Executive Committee or industry committee chair positions	✓	✓	✓	✓	✓
Twenty membership e-card holders	✓	✓	✓	✓	Only 1
Priority speaking opportunities at Chamber events	✓	✓	✓	✓	
Access to CEO roundtables, high level meetings and 1915 Dinners	✓	✓	✓	✓	
Brand exposure on the Chamber's Platinum Wall	✓	✓			
Brand exposure on all official digital posts	✓	✓			
Extra promotional video and ad space in the Member Directory	✓	✓			
Access to Platinum member-only events	✓	✓			
Four free advertising banners per year on weekly newsletter	✓	✓			
Four free WeChat advertising promotions per year	✓	✓			
Showcase session opportunity	✓	✓			
Further discounted sponsorship rates for all Great British Events	✓	✓			

**Clauses:**

- *Non-British foreign entities and associate memberships enjoy the same access as other members except: events held in conjunction with the UK government or on sensitive matter.*
- *Associate memberships cannot run or vote for the Executive Committee or be the chairperson of a committee.*
- *Small Enterprise Members can only have ONE e-card holder.*
- *All the prices are tax-inclusive*

# Platinum Members

## Platinum & Associate Platinum Members



## Value-added services

### Showcase Session

An event dedicated to your company, giving you the opportunity to introduce and promote products and services to interested British Chamber Shanghai members and non-members. This chargeable service includes event management and marketing promotion support.

### Sponsorship Opportunities

Our Chamber events calendar provides excellent opportunities for extra promotion. Boost your brand's exposure by sponsoring our business and social events - as well as special events, including: Great British Day Out, Corporate Sports Day, Gala Balls, Summits, and Awards.



### Advertise with us

Across our platforms and social media, we offer dedicated advertising packages to raise your brand awareness throughout East China and the wider international business community.

### One-to-one Consultation

This 1-2-1 business consultancy session is offered when you first join as a member - and thereafter, at the Chamber's discretion, when you feel you need additional support.

## Our legacy

The British Chamber of Commerce Shanghai first launched in China in 1915 as the First World War was escalating. 10 British firms met at the British Consulate-General to discuss how to protect British interests. One week later, the British Chamber of Commerce, Shanghai was established with a total of 60 members and by the end of 1916, its membership had grown to 250. Our story continues today ...

## Our team



**Stuart Dunn**  
Executive Director



**Janet Jiang**  
Deputy Executive Director



**Wendy Kang**  
Office Manager



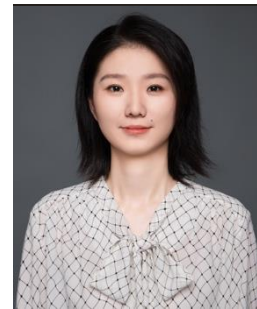
**Stephanie Feng**  
Key Account Manager



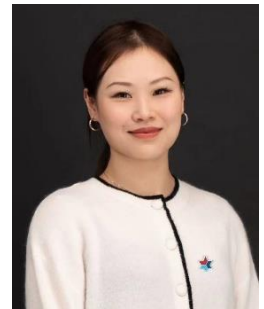
**Eloise Zhang**  
Committee & Advocacy Manager



**Elly Huang**  
Account Manager



**Lois Lu**  
Zhejiang Ambassador



**Yiwen Ling**  
Project & Industry Relations Executive



**Anita Lou**  
Events & Marketing Executive



**Bale Xu**  
Committee Events & Marketing Executive



**Yimeng Xia**  
Events & Marketing Executive



**Yuting Zhu**  
Advocacy & Committee Executive



# 2026 Key Activities

Entering the Year 2026, the Chamber and its committees continue to drive and organise a range of activities that bring members and the wider business community not only insights and knowledge, best practices and lessons learnt, but also networking and match-making opportunities to build trusted and long-lasting friendships.

## Q1 (Jan to Mar)

- \* Annual General Meeting
- \* GR Series
- \* Quarterly Platinum Member Breakfast
- \* Quarterly Member Briefing
- \* Quarterly Economic Outlook
- \* International Women's Day Celebration Breakfast
- \* Zhejiang Office Event Series
- \* Committee Events
- \* Training Sessions
- \* 1915 Club Burns Night
- \* After Hours Social Mixers
- \* Sustainability & Innovation Awards Launch

## Q3 (Jul to Sep)

- \* GR Series
- \* Quarterly Member Briefing
- \* Quarterly Platinum Member Breakfast
- \* Quarterly Economic Outlook
- \* Committee Events
- \* Training Sessions
- \* After Hours Social Mixers
- \* 1915 Club Dinner

## Q2 (Apr to Jun)

- \* GR Series
- \* Quarterly Member Briefing
- \* Quarterly Platinum Member Breakfast
- \* Quarterly Economic Outlook
- \* Zhejiang Office Event Series
- \* Committee Events
- \* Training Sessions
- \* After Hours Social Mixers
- \* British Ball
- \* Sustainability & Innovation Awards Summit

## Q4 (Oct to Dec)

- \* Government Dinner
- \* Quarterly Member Briefing
- \* Quarterly Platinum Member Breakfast
- \* Quarterly Economic Outlook
- \* Committee Events
- \* Training Sessions
- \* Great British Day Out
- \* Christmas Social Mixer

Please visit Chamber Website [www.britishchambershanghai.cn](http://www.britishchambershanghai.cn) for further details of confirmed activities.

*\* BritCham Shanghai reserves the right to alter the above plan.*

In addition, we would like to recognise the incredible support from the membership and wider business community for sponsoring our activities.

\* Including both general events and special events; logos are listed in no particular order.

